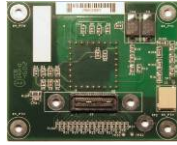


Sensor Interface Board Selection Guide

16 and 32 Channel PMT



SIB016



SIB116



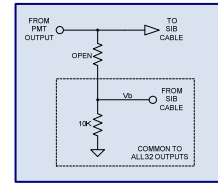
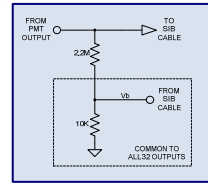
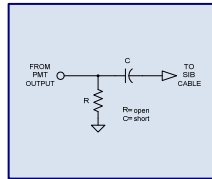
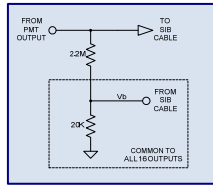
SIB232



SIB232D

Compatible Sensor	R5900U-L16 Series	H8711 Series	H7260 Series	H7260 Series
Sensor Manufacturer	Hamamatsu	Hamamatsu	Hamamatsu	Hamamatsu
Sensor Type	Multianode Photomultiplier Tube	Multianode Photomultiplier Tube	Multianode Photomultiplier Tube	Multianode Photomultiplier Tube
Number of Channels	16	16	32	32
Configuration	Linear	Array (4 x 4)	Linear	Linear

Sensor Coupling Circuit



Last Dynode Circuitry

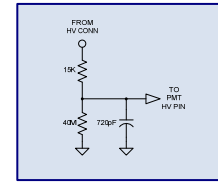
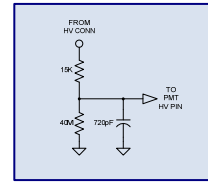
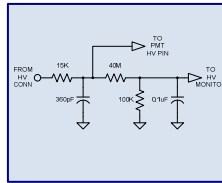
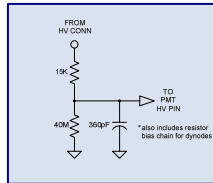
No

No

Yes
Preamp & Discriminator

Yes
Preamp & Discriminator

High Voltage Power Supply Interface Circuit



Dimensions

76mm x 64mm

76mm x 64mm

76mm x 64mm

76mm x 64mm



Vertilon Corporation has made every attempt to ensure that the information in this document is accurate and complete. Vertilon assumes no liability for errors or for any incidental, consequential, indirect, or special damages including, without limitation, loss of use, loss or alteration of data, delays, lost profits or savings, arising from the use of this document or the products which it accompanies. Vertilon reserves the right to change its products without prior notice. No responsibility is assumed by Vertilon for any infringements of patents or other rights of third parties which may result from the use of its products. No license is granted by implication or otherwise under the patent and proprietary information rights of Vertilon Corporation.